



Van verkeersbordendatabank naar duurzame routing

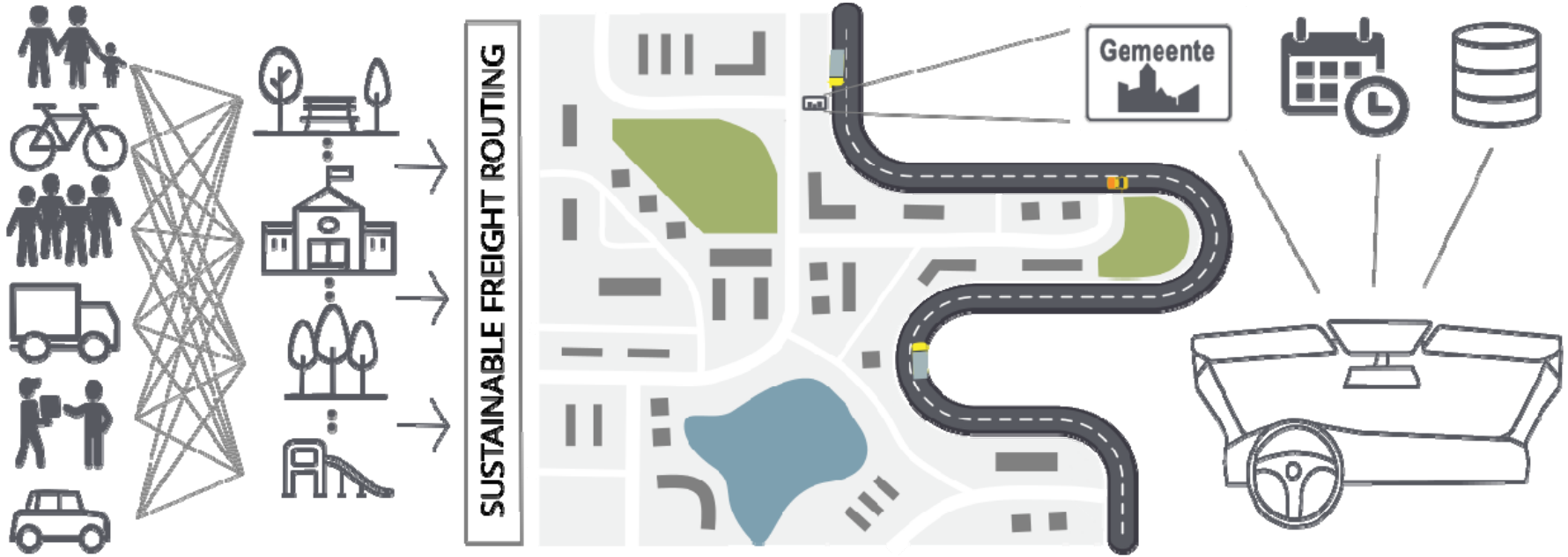
Sidharta Gautama

Ivana Semanjski

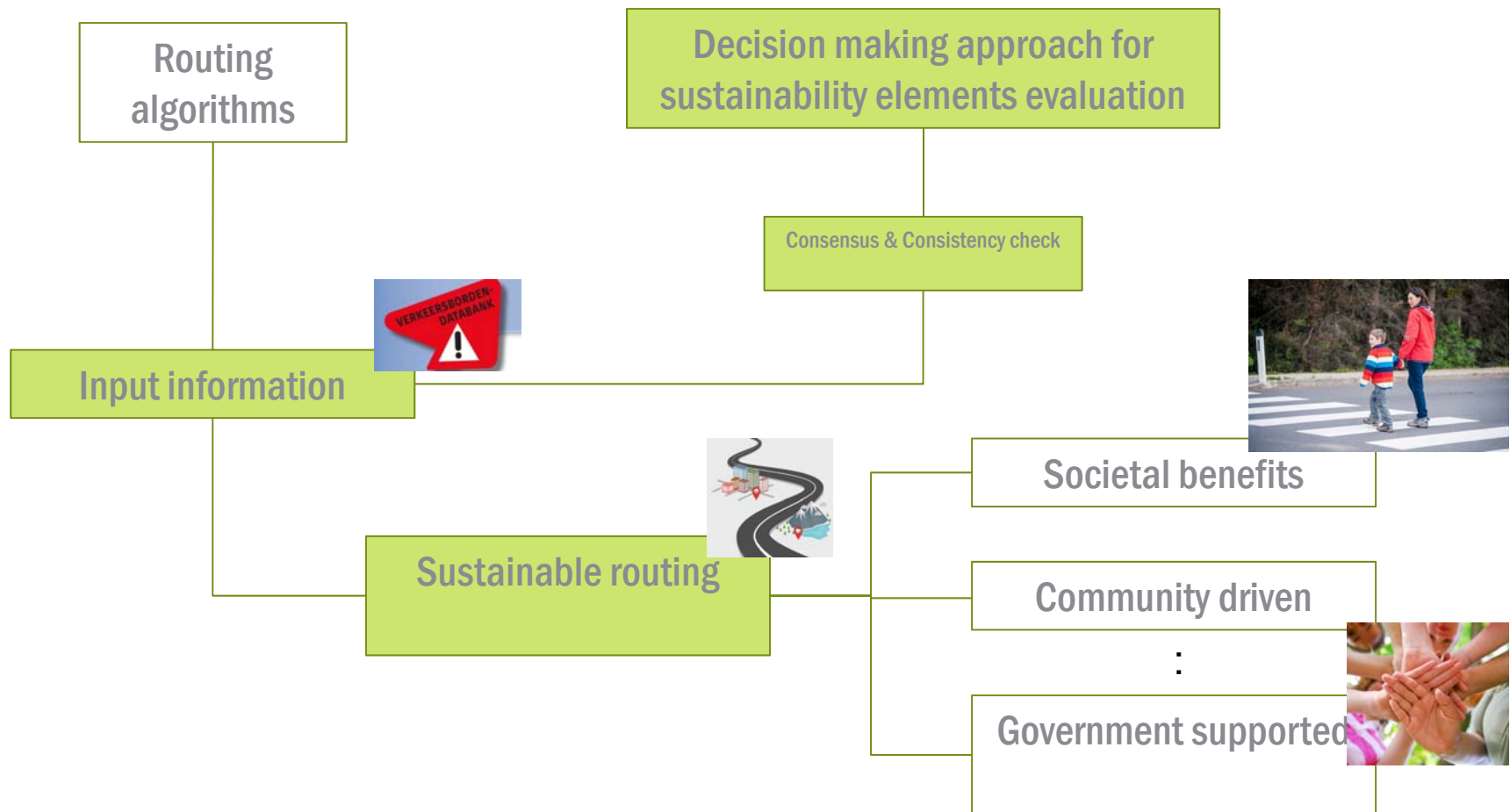
Johan De Mol



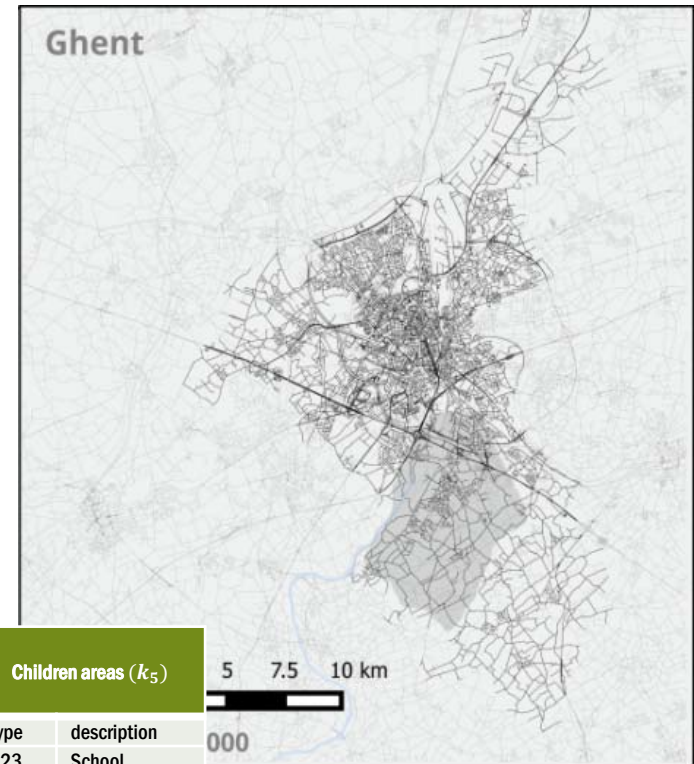
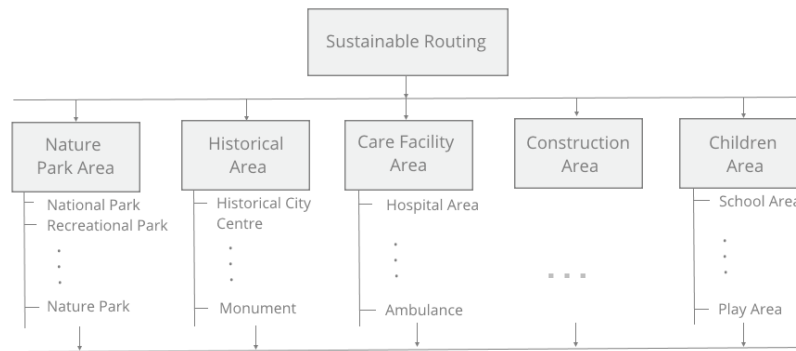
Sustainable routing



Sustainable routing



Sustainable routing



Nature park areas (k_1)		Historical areas (k_2)		Care facility areas (k_3)		Construction areas (k_4)		Children areas (k_5)	
type	description	type	description	type	description	type	description	type	description
S34	Park Area	S31	Castle	F53	Nursing Facility/Hospital	A31	Construction Works	A23	School
S36	National Park Area	S32	Ruins	F55	Aid station/Ambulance	F47	End of Construction Works	F12a	Play area
		S33	Abbey					A23	School (Off school period)
		S35	Monument						



Multicriteria analysis

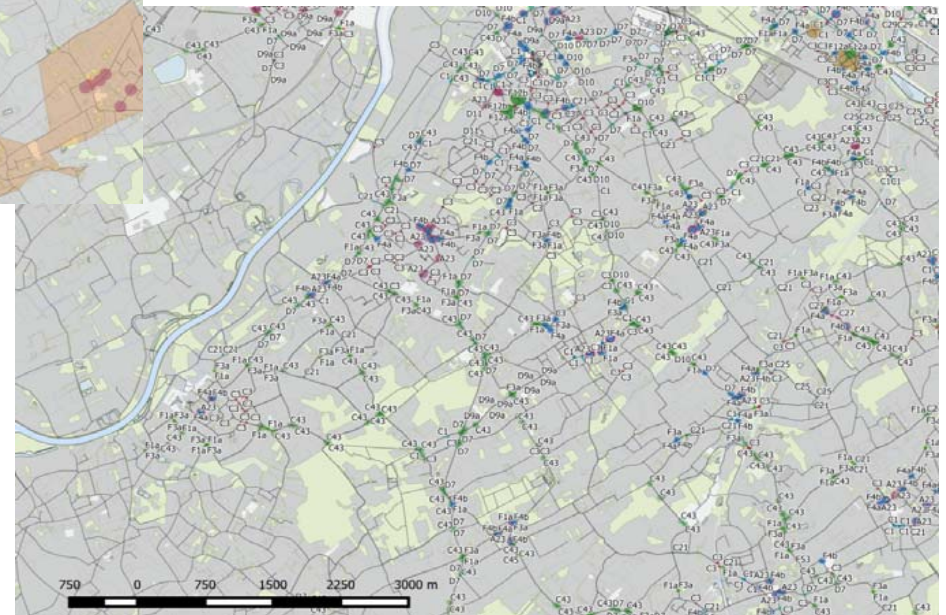
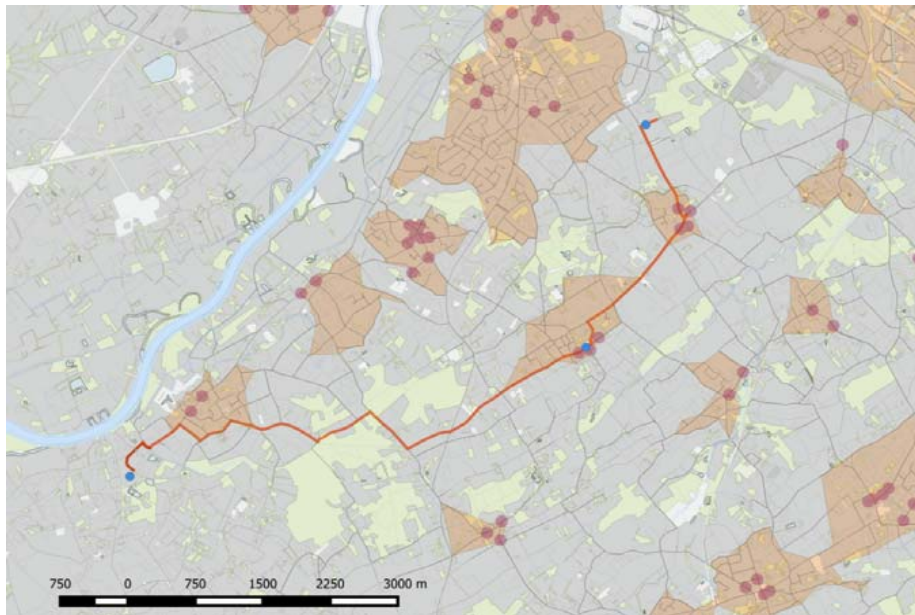


1. Identificatie van verschillende duurzaamheidsfactoren (veiligheid, milieu)
2. Identificatie van verschillende impactzones (school, zorg, constructive)
3. Paarsgewijze evaluatie van belang
4. Calibratie kostfactor α

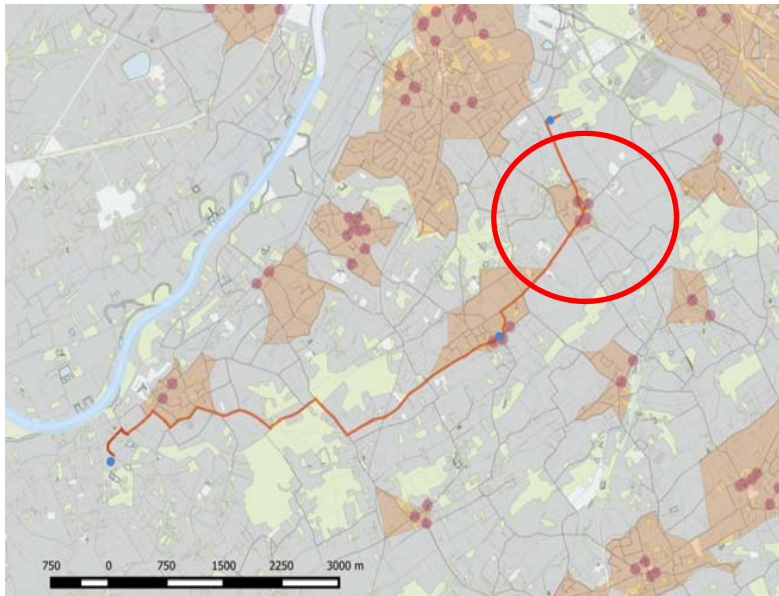
	D	λ_{max}	CI	RI	CR
Nature park areas	2	2.00000	0.00000	0.00	0.0000
Historical areas	4	4.00554	0.00185	0.90	0.0021
Care facility areas	2	2.00000	0.00000	0.00	0.0000
Construction areas	1	1.00000	1.00000	0.00	0.0000
Children areas	3	3.10564	0.05282	0.58	0.0911



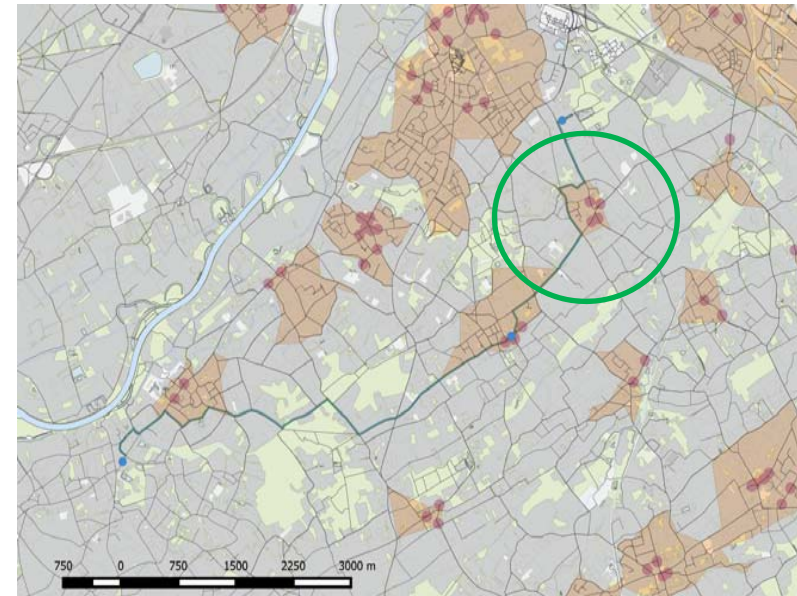
Use case – Route in Merelbeke



Use case – Route in Merelbeke



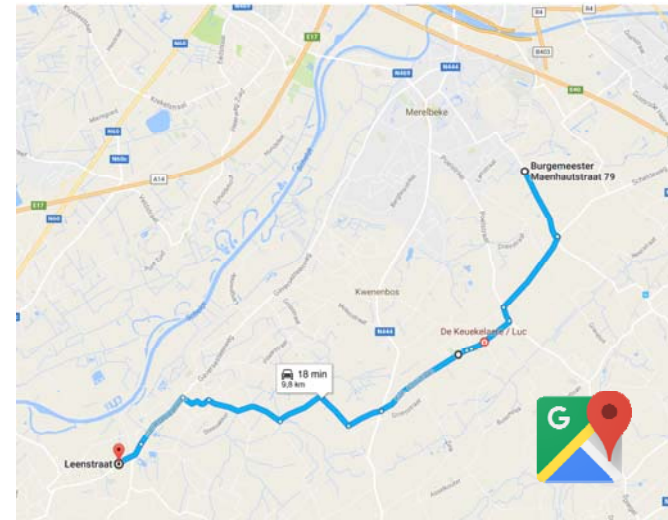
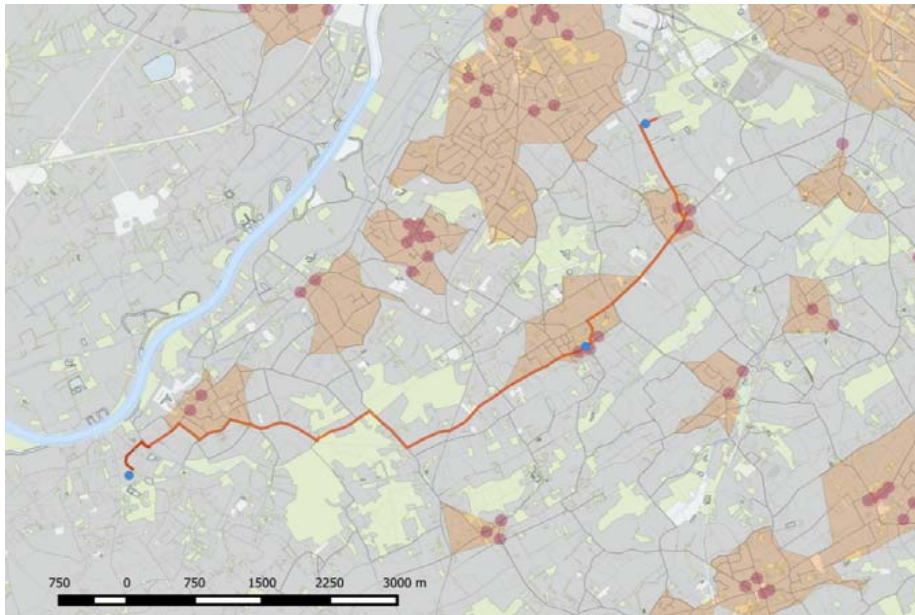
standard route



sustainable alternative



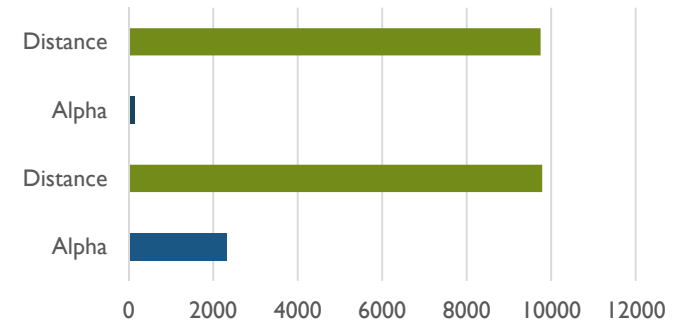
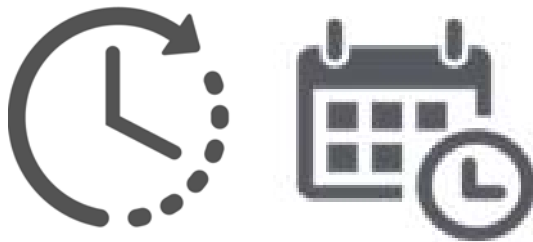
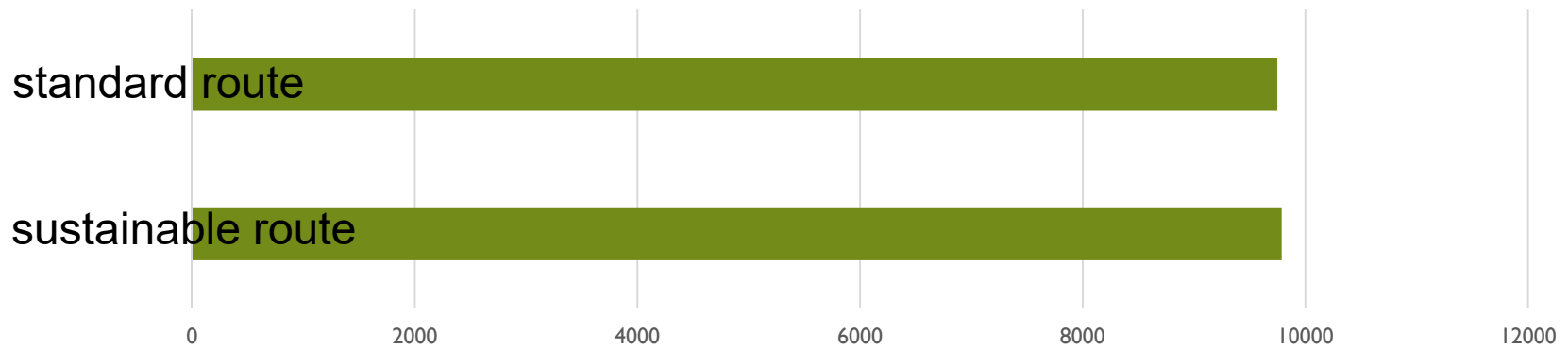
Use case – Route in Merelbeke





Use case – Route in Merelbeke


Distance






 Sidharta.Gautama@UGent.be

 Ivana.Semanjski@UGent.be

 +32 (0) 9 264 34 10

 <http://iknow.ugent.be/>

 Sint-Pietersnieuwstraat 41
9000 Gent, België